

Directions to Millbrook Glenview

From O'Hare Airport to 3703 W. Lake Avenue, Glenview, IL

- Take I-190 East ramp towards Chicago Loop.
- Merge onto I-190 East.
- Take the I-294 North Toll way exit.
- Merge onto I-294 Toll North.
- Take slight right onto Tri-State Toll way North
- Take the Willow Road exit.
- Keep right at the fork, follow signs for Northbrook/Glenview and merge onto Willow Road.
- Turn right at Pfingsten Road
- Turn left at West Lake Avenue
- 3703 West Lake Avenue will be the first driveway on the right

From the South

- Take I-94 North or I-294 North towards Milwaukee.
- Exit IL-22/Half Day Road.
- Turn left onto Half Day Road – heading West
- After crossing the Des Plaines River, pass two stoplights (the first will be Milwaukee Avenue and the second will be Barclay Blvd.). After passing the second stoplight, you pass Shelter Road and the next street on the left is Millbrook Drive.
- Make a left onto Millbrook Drive (you will be on a roadway between the 475 and 485 buildings) and the building on the right is 485. As you follow Millbrook Drive a short distance, there is a driveway on your right. Turn onto that driveway and you will see the entrance to the 485 building. There is guest parking outside the entrance to 485.

From the East

- Head West on IL-22/Half Day Road.
- After crossing the Des Plaines River, pass two stoplights (the first will be Milwaukee Avenue and the second will be Barclay Blvd.). After passing the second stoplight, you pass Shelter Road and the next street on the left is Millbrook Drive.
- Make a left onto Millbrook Drive (you will be on a roadway between the 475 and 485 buildings) and the building on the right is 485. As you follow Millbrook Drive a short distance, there is a driveway on your right. Turn onto that driveway and you will see the entrance to the 485 building. There is guest parking outside the entrance to 485.

From the West

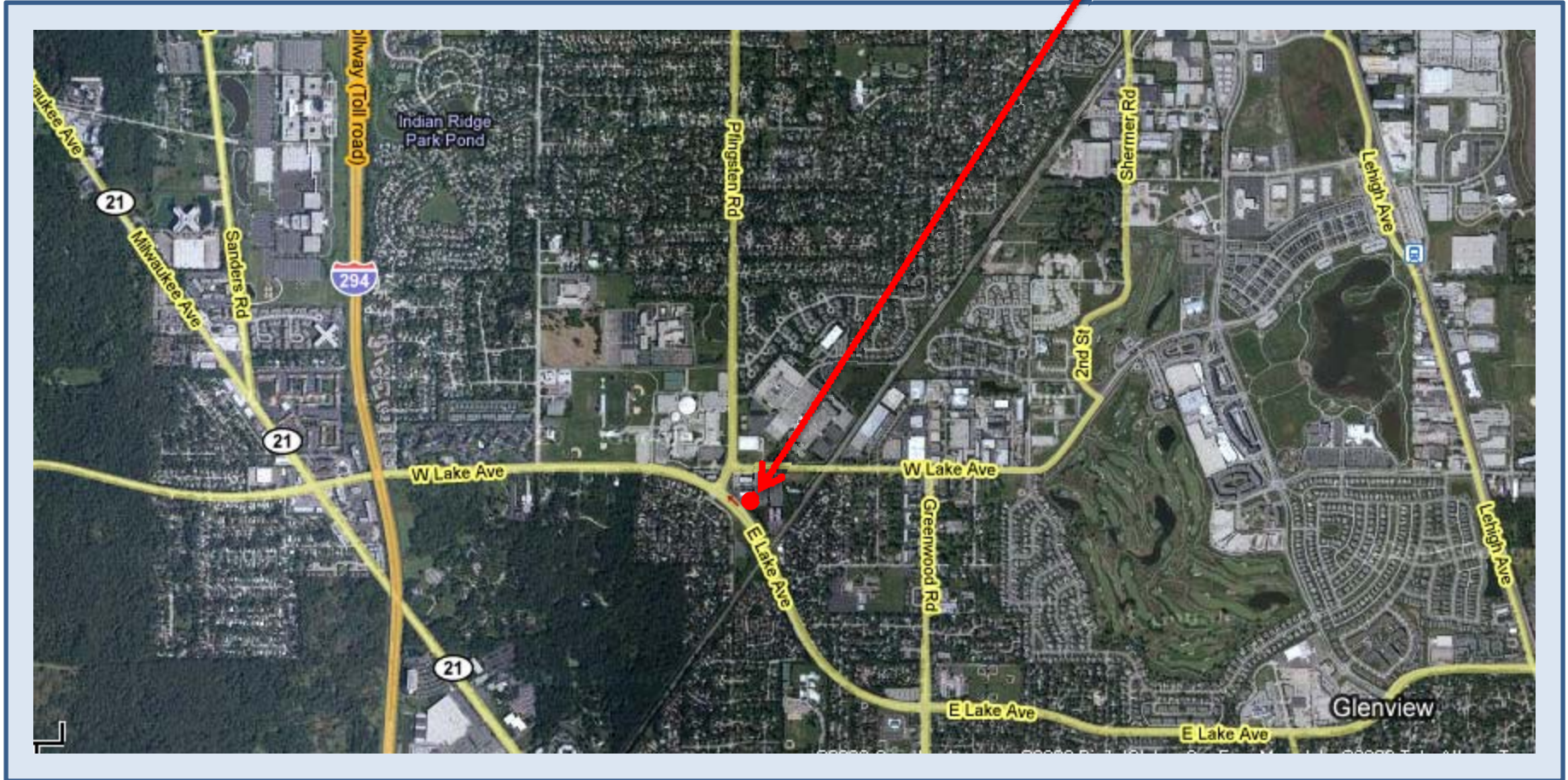
- Head East on IL-22/Half Day Road.
- The office is approximately 1 mile East of Buffalo Grove Road; pass by Stevenson High School (which will be on your left).
- Turn right onto Millbrook Drive and the building on the right is 485.
- As you follow Millbrook Drive a short distance, there is a driveway on your right. Turn onto that driveway and you will see the entrance to the 485 building. There is guest parking outside the entrance to 485.

MILLBROOK

GLENVIEW BUILDING LOCATION



3703 West Lake Avenue
Glenview, IL

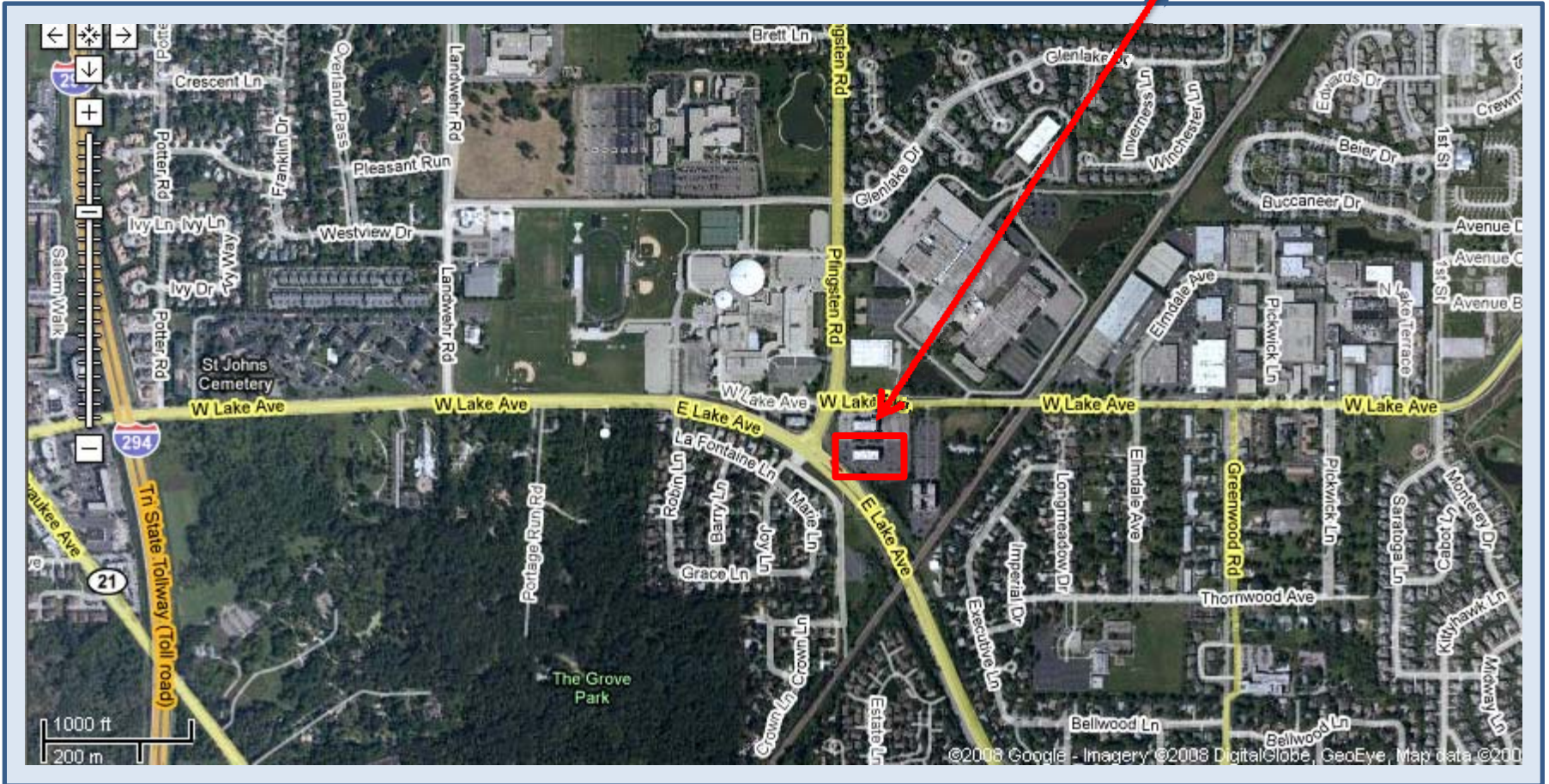


MILLBROOK

GLENVIEW BUILDING LOCATION



3703 West Lake Avenue
Glenview, IL



MILLBROOK

GLENVIEW BUILDING LOCATION



3703 West Lake Avenue
Glenview, IL

